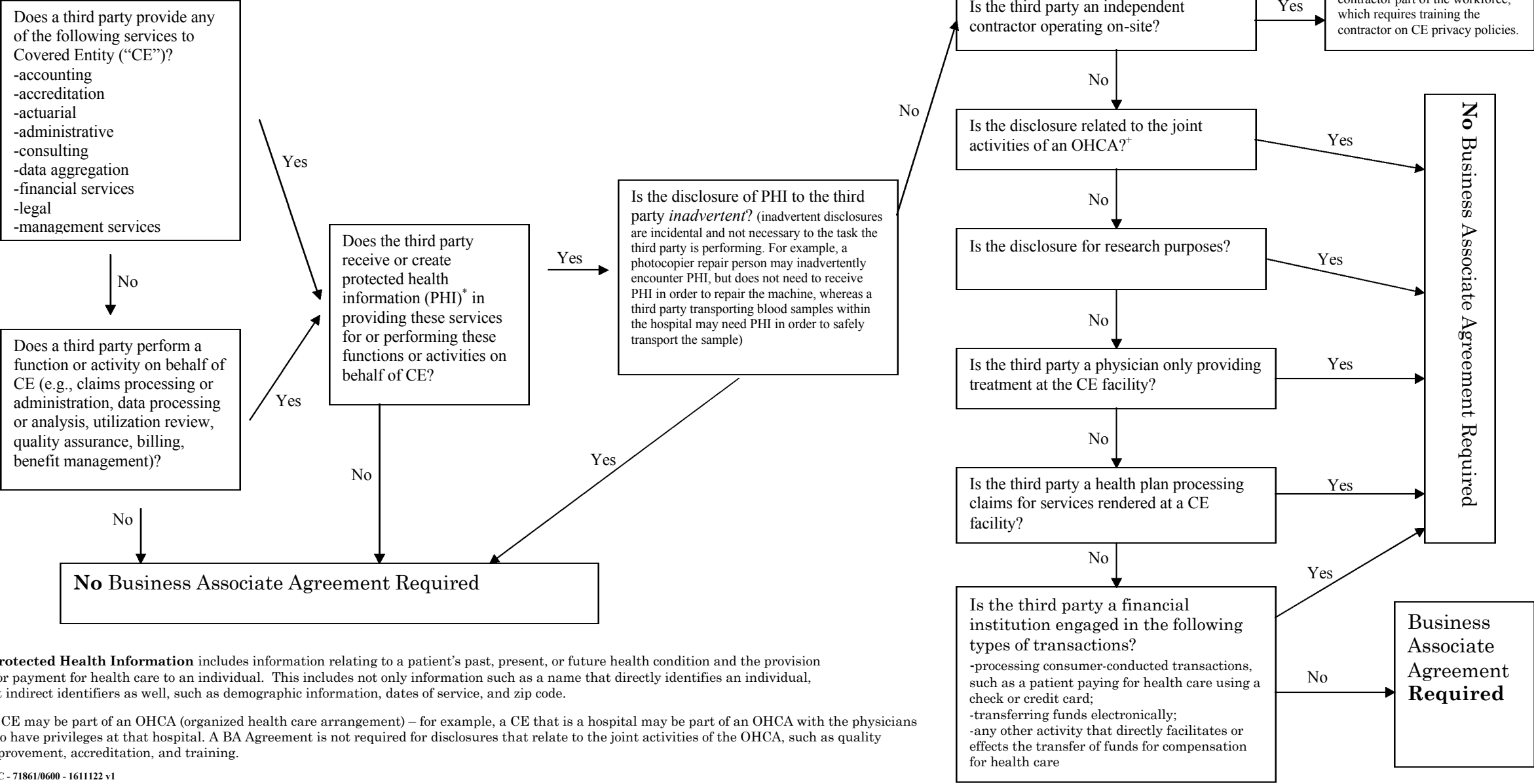


Covered Entity Business Associate Worksheet



***Protected Health Information** includes information relating to a patient’s past, present, or future health condition and the provision of or payment for health care to an individual. This includes not only information such as a name that directly identifies an individual, but indirect identifiers as well, such as demographic information, dates of service, and zip code.

+A CE may be part of an OHCA (organized health care arrangement) – for example, a CE that is a hospital may be part of an OHCA with the physicians who have privileges at that hospital. A BA Agreement is not required for disclosures that relate to the joint activities of the OHCA, such as quality improvement, accreditation, and training.